

Cristal entries filtered by Stop and Reverse

Trend pullback strategy

Submit by Moreno

Cristal with Stop and Reverse forex strategy provides three different trading styles in the same time but with an strong filter trend following as Stop and reverse and an optional strong momentum filter.

Time frame 5 min or higher, scalping, day trading and swing trading.

Currency pairs: any

Trading rules Cristal with Stop and Reverse

Buy

Blue square below the candle.

Stop and reverse blue line below the candle.

Momentum indicator below the chart blue bar.

Sell

Black square above the candle.

Stop and reverse black line above the candle.

Momentum indicator below the chart black bar.

The bottom BLUE/BLACK Indicator trend-momentum filter is optional. The bottom indicator is to give you a heads up what signals to expect. Entry squares will be always in line with the trend, so the only thing you need to watch is the entries (small squares on the chart).

Stop Loss and take profit

Stop loss order should be placed in the technically best place: - the last swing high (for the SELL trade) - last swing low (for the BUY trade) - at the round number (if close) - close to important support/resistance area.

Place also stop loss below/above stop and reverse lines.

Try to minimize your stop loss and aim for high RR ratios. For example: If the last swing is MUCH closer than round level, put the stop loss on the last swing. The ideal trades in daytrading (m5-m15) are when your risk 15-20 pips and aim for 40-50. If you scalp (m1-m5) try to risk no more than 10 and try to reach 20+ pips. If you are swing trader (h1-d1) the stop loss should be around 30- 50 pips, while take profit 100+ pips.

This is a winning strategy. Open many charts to trade because the filter is very robust some good operations will jump but also and more negative operations.

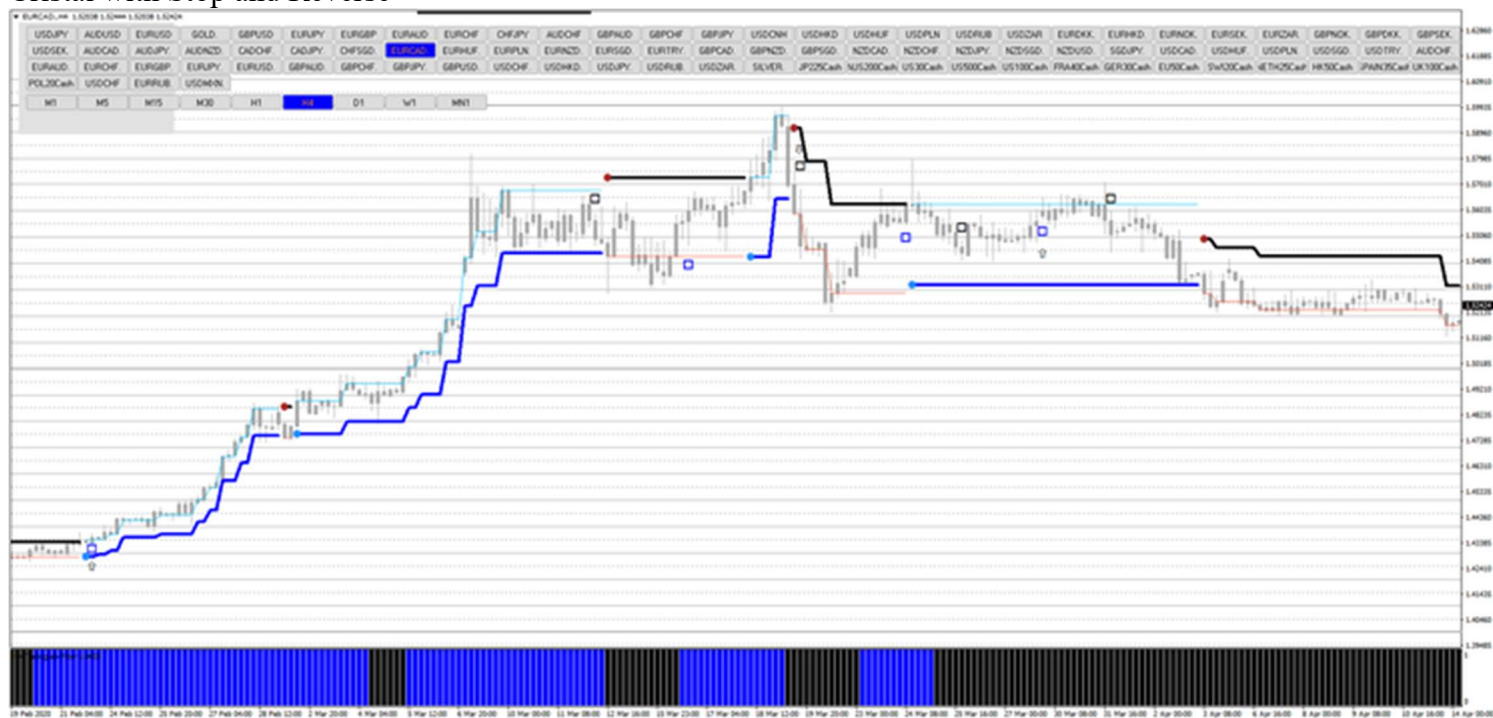
In the pictures Cristal with Stop and Reverse in action.



Cristal with Stop and Reverse



Cristal with Stop and Reverse



Cristal with Stop and Reverse



Cristal with Stop and Reverse



Cristal with Stop and Reverse